

	TYPE NAME	CABINET NAME	FILE NAME	
1	CLEAN	USER 1	V-Type 112 C R-121 Balanced Celestion.wav	⬇
2	TWN	USER 2	A-Type 212 O Lo-Gn 421+121 Celestion.wav	⬇
3	TWEED	USER 3	G10 Gold 410 C Lo-Gn 121+57 Celestion.wav	⬇
4	DIAMOND	USER 4	Cel Blue 212 O HI-Gn 421+121 Celestion.wav	⬇
5	CRUNCH	USER 5	G12-65 212 O Lo-Gn 421+121 Celestion.wav	⬇
6	BRIT	USER 6	G12M-Heritage 412 C MD421 Balanced Celestion.wav	⬇
7	HI-GAIN	USER 7	G12M-CreambK 412 C MD421 Balanced Celestion.wav	⬇
8	SLDN	USER 8	V30 412 C MD421 Balanced Celestion.wav	⬇
9	BROWN	USER 9	G12M-Heritage 412 C MD421 Balanced Celestion.wav	⬇
10	MODDED	USER 10	G12K-100 412 C MD421 Balanced Celestion.wav	⬇
11	RFIER	USER 11	V30 412 C MD421 Balanced Celestion.wav	⬇

IR-2 IR Loader

Owner's Manual

This manual explains how to use IR-2 IR Loader (hereafter "IR Loader").

Table of contents

Getting ready to use IR Loader.....	3
Loading IR data into the IR-2.....	5
Editing the system parameters	7
Other functions	8

Getting ready to use IR Loader

Installing the USB driver

Before you use IR Loader, the appropriate USB driver for the product you're using must be installed on your computer.

1. **From the product support page, download the IR-2 Driver.**

To obtain the latest USB driver, access the following URL, and download and install the appropriate driver for the product you're using.

<https://www.boss.info/global/products/ir-2/downloads/>

2. **Double-click the downloaded IR-2 driver.**

Installation begins.

Proceed with the installation as directed by the installation screens.

3. **When the screen indicates "Installation has been completed.", click the [Close] button.**

The IR-2 driver has been installed on your computer.

Installing IR Loader

MEMO

Before you install IR Loader, you must follow the steps described in "Installing the USB driver" to install the USB driver on your computer.

Windows users

1. **From the product support page, download the "IR-2 IR Loader".**

2. **Double-click the file you downloaded to decompress it.**

3. **Double-click "IR-2 IR Loader Installer.exe" in the folder you just decompressed.**

Installation begins.

Proceed with the installation as directed by the installation screens.

4. **When the screen indicates "Installation has been completed. ", click the [Close] button.**

macOS users

1. **From the product support page, download the "IR-2 IR Loader".**

2. **Double-click the file you downloaded to decompress it.**

3. **Double-click "IR-2 IR Loader Installer.pkg" in the folder you just decompressed.**

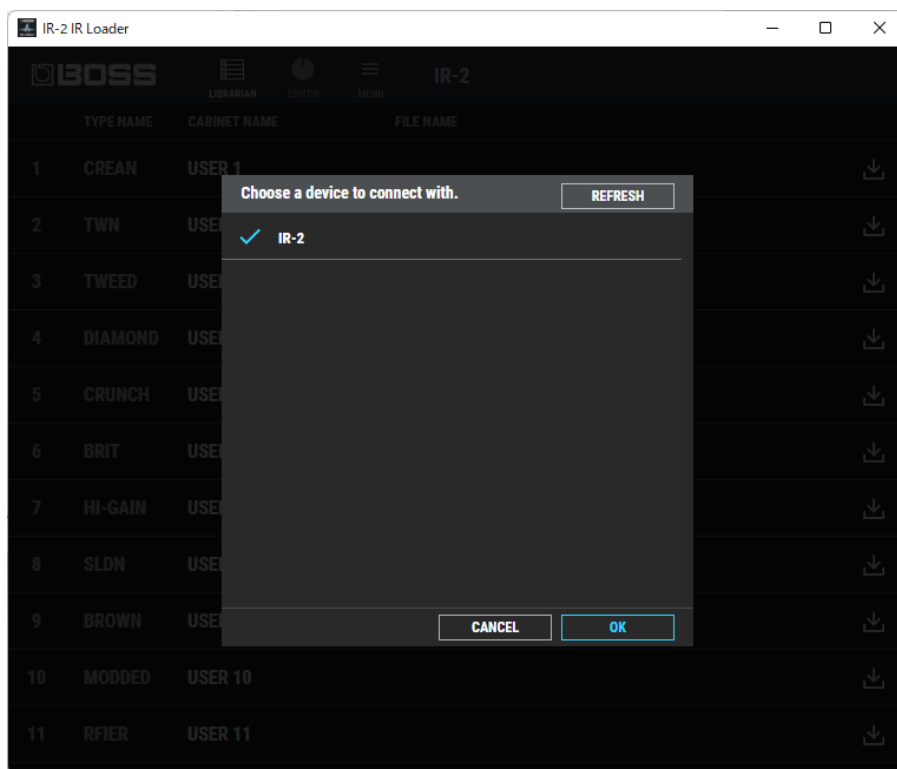
Installation begins.

Proceed with the installation as directed by the installation screens.

4. **When the screen indicates "The installation was successful. The software was installed", click the [Close] button.**

Launching IR Loader

1. Connect your computer to the IR-2 using a commercially available USB cable that supports USB 2.0.
2. From the [Start] menu, select [IR-2] → [IR-2 IR Loader].



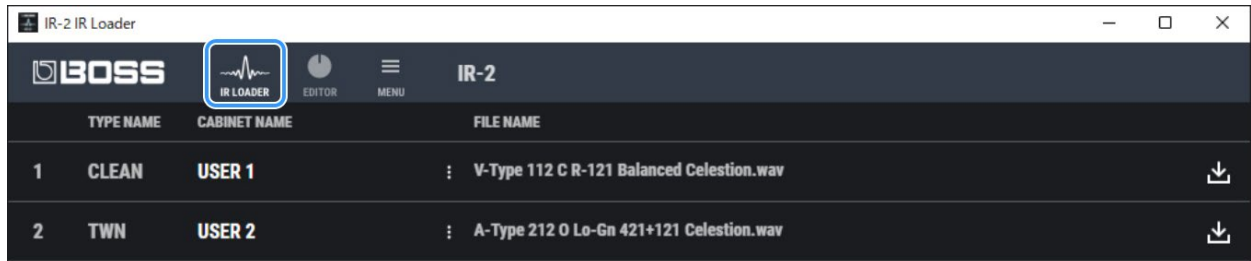
macOS users

From the Finder, in the Applications/BOSS/IR-2 folder, double-click [IR-2 IR Loader (.app)].

3. When “Choose a device to connect with.” appears, select “IR-2” and click the [OK] button.

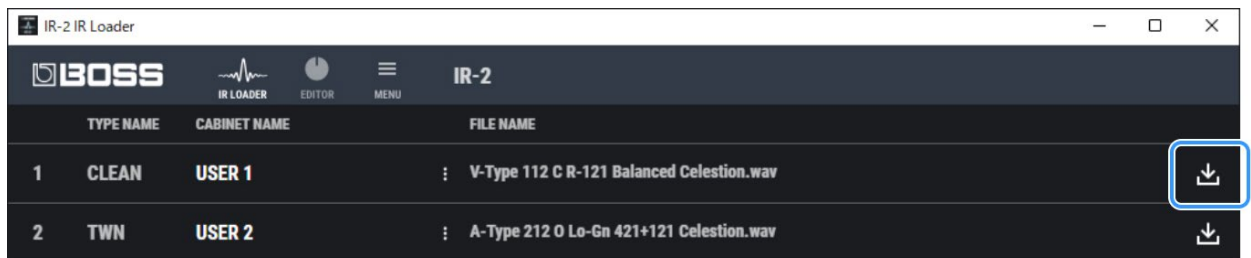
Loading IR data into the IR-2

1. Click the  (IR LOADER) icon.



The IR Loader screen appears.

2. Click the  icon.



A dialog box for opening the file appears.

3. Select the IR file.

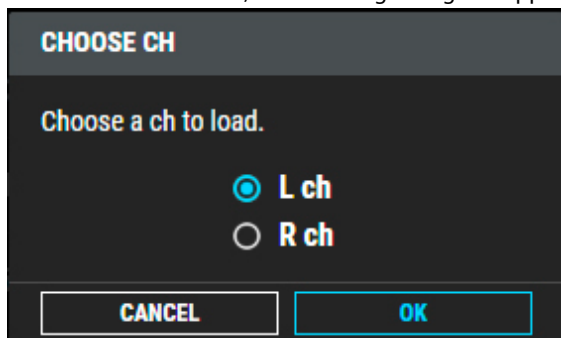
IR data formats that can be loaded

Item	Explanation
Format (extension)	WAV (.wav)
Sampling frequency	44.1, 48, 96 kHz
Bit rate	16/24-bit linear, 32-bit floating point
Length	200, 500 ms

4. Select the IR data to load, and click the [Open] button.

This loads the data into the IR-2.

If the IR data is in stereo, the following dialog box appears. Choose one of the channels and click the [OK] button.



MEMO

- It may take a little time to convert the IR data.
- A name is automatically given to the converted IR data. Edit the name as needed.

Once the IR data has finished converting, the app returns to the IR Loader screen.

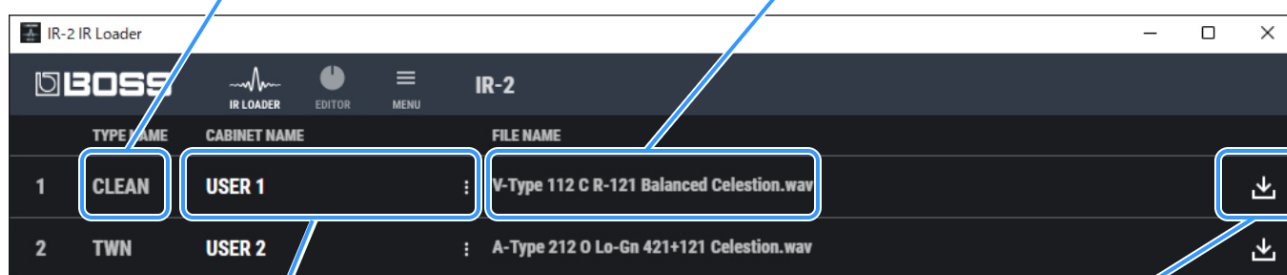
NOTE

- Do not unplug the USB cable or turn the IR-2 off while IR data is loading. Doing so may corrupt the data.
- If you quit the IR data loading while it is in progress, load the IR data again.

Explanation of elements used on this screen

The type name listed on the panel of the IR-2.
Use this as a reference for the slot you want to load.

The IR data filename.
The filename of the IR data you loaded is stored.

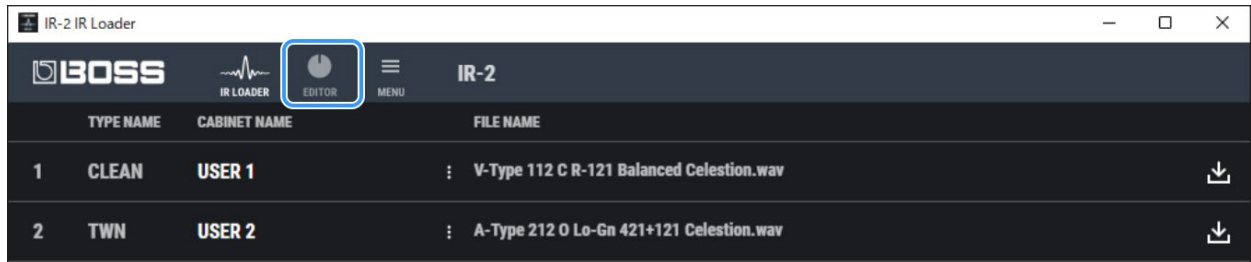


The cabinet name.
Click the three dots at right to change the name as desired.
Use this to differentiate between the IR data.

The IR data load button.
You can load your own IR data to have fun playing with different sound variations.

Editing the system parameters

1. Click the  (EDITOR) icon.



The EDITOR screen appears.

2. Edit the parameters as desired.

SYSTEM SETTING

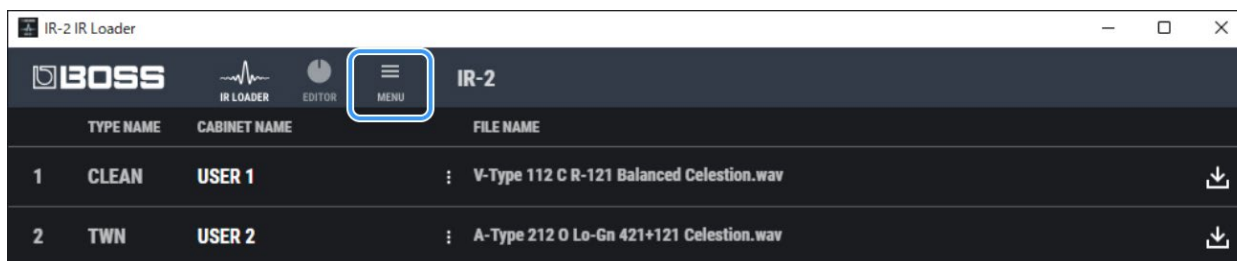
Parameter	Explanation
AMP/CAB SW	Turns the amp or cabinet on/off. ➡ "Turning the amp or cabinet on/off" (IR-2 Owner's Manual)
AMBIENCE TYPE	Sets the ambience type. ➡ "Setting the ambience type" (IR-2 Owner's Manual)
OUTPUT SELECT	Selects the amp to connect to the IR-2. The sound is optimized for the amp you select. ➡ "Specifying the amp to connect" (IR-2 Owner's Manual)
RETURN MODE	Set this according to the signal that's input to the IR-2 RETURN jack. ➡ "Selecting the input signal for RETURN" (IR-2 Owner's Manual)

USB SETTING

Parameter	Explanation
MODE	Set this to match the device you've connected, so that USB audio works correctly. ➡ "Setting the USB mode" (IR-2 Owner's Manual)
LOOPBACK	OFF, ON: When this is "ON", the input sound from the computer is looped back to the computer as-is.
EFX OUT LEVEL	0-200: Adjusts the level of the sound that's output to the computer after passing through the IR-2 effect.
MIX IN LEVEL	0-200: Adjusts the level of the sound that's input from the computer. The input sound from the computer is mixed into the final stage of the IR-2's signal chain.
LOOPBACK LEVEL	0-200: Adjusts the level of sound that's looped back to the computer when LOOPBACK is "ON".

Other functions

1. Click the  (MENU) icon.



The MENU screen appears.

The following functions can be selected.

Item	Explanation
OWNER'S MANUAL	Displays the BOSS support website in your Web browser. You can download the Owner's Manual from here.
DEVICE SETTING	Checks/edits where the IR Loader is connected.
VERSION	Shows the IR Loader version and license.
SLOT RESET	You can initialize a specific IR slot to its factory settings. Select the slot (type name) you want to initialize, and click RESET.
ALL DATA BACKUP	Backs up all of the memory and settings of the IR-2 (including the IR data), or restores the backup data to the IR-2. * This overwrites all memories and settings of the IR-2 (including the IR data).

NOTE

- Do not unplug the USB cable or turn the IR-2 off while the SLOT RESET operation is in progress or while the unit is restoring data via the ALL DATA BACKUP operation. Doing so may corrupt the data.
- If you quit these operations before they are finished, you must perform them again.

IR-2 IR Loader
Owner's Manual

01

©2023 Roland Corporation