

JUNO-DS Version 2 Supplementary Manual

JUNO-DS Program Update

This explains how to update the JUNO-DS's system program.

Checking the Version

Before you download the system program, check the version of your JUNO-DS.

1. Press the [MENU] button.
2. Move the cursor to "SYSTEM," and press the [ENTER] button.
3. Move the cursor to "INFORMATION" tab.

What You'll Need for the Update

In order to update your JUNO-DS, you'll need the following items.

- JUNO-DS itself
- Computer to write the updater to the USB flash drive
- USB flash drive (the USB flash drive needs to be formatted on a JUNO-DS)

Download the System Program and Uncompress the Compressed File

Download the file named "**juno_ds_sys_v200.zip**."

It is an archive file in zip format, please double click on the file to expand.

After expanding the file, the folder "**juno_ds_sys_v200**" holding the file "**juno_ds_up.bin**" will be appeared.

Note When Updating

- We recommend that you save your data to a USB flash drive before you perform the update. If a problem occurs and your data is lost, you will be able to restore the original state by reloading the data you saved.
For details on the procedure, refer to the following sections of the "Saving JUNO-DS's Data to USB Flash Drive (BACKUP)" of the Owner's Manual.
- Never apply this update data to any product other than the JUNO-DS. This update data may destroy the data or system program of other products.
- **Never power-off your JUNO-DS while the update is in progress!**
If a power failure or similar accident occurs during the update process, the JUNO-DS won't be able to start up in normal operating mode. This will require servicing, so you will need to contact Roland service center near you if this occurs.
- We regret that we are unable to answer questions regarding the update procedure using this system program. Please perform the update responsibly, following the directions given in this document.

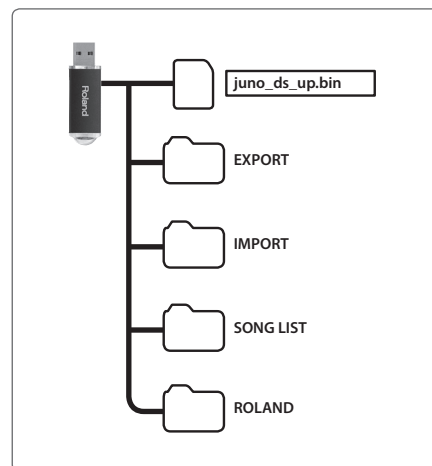
Update Procedure

Follow the procedure below to install the program "juno_ds_up.bin" in your JUNO-DS.

NOTE

Never turn off the JUNO-DS's power while the update is in progress.
Doing so may make the JUNO-DS's system unable to start up correctly.

1. Copy the update-use file (juno_ds_up.bin) to the root directory of the USB flash drive.



2. Make sure the JUNO-DS's power is switched off, then connect the USB flash drive to the USB MEMORY port.
3. Hold down the [TAP] button and switch on the power.
4. When the message "start update." appears, release the [TAP] button.
The update starts.
When the message "===update finished.===" is displayed, the operation has finished. (It will take about 1 minute to update.)

* The update process takes several minutes to finish. Be sure never to switch off the power before the operation finishes.
5. Switch off the power.
6. Detach the USB flash drive, then switch on the power to the unit and verify that the version has been updated.

Functions Added in JUNO-DS Ver.2

Favorite

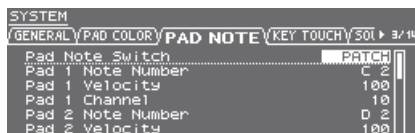
Program change and bank select MIDI messages can now be transmitted when you recall a favorite, as described below. This is a convenient way to select sounds or switch programs on a MIDI-connected external sound module.

Content registered in a favorite		MSB	LSB	PC
Patch	DS/PRST/GM/ EXP Bank	Values for each sound (refer to the parameter guide and sound list)		
	USER Bank: 0501–0628	87	0	1–128
	USER Bank: 0629–0756		1	
Drum Kit	DS/PRST/GM/ EXP Bank	Values for each sound (refer to the parameter guide and sound list)		
	USER Bank: R501–R508	86	0	1–8
Performance	PRST Bank	85	64	1–64
	USER Bank		0	1–128

Phrase Pads

MIDI note messages can now be transmitted when you press a pad. This lets you use the pads to play drums or phrases. The messages to be transmitted can be individually specified for each pad.

1. Press the [MENU] button.
2. Move the cursor to “SYSTEM,” and press the [ENTER] button.
3. Move the cursor to the tab, and use the [◀] [▶] buttons to select the “PAD NOTE” tab.



4. Move the cursor to the parameter that you want to edit, and use the value dial to edit the value.
5. Press the [EXIT] button to exit the screen.

MEMO

MIDI note messages are transmitted only if you've selected the patch or performance top screen, or in the SYSTEM screen when the PAD NOTE tab is selected.

Parameter	Values/Explanation
Pad Note Switch	Specifies the mode in which MIDI note messages are transmitted.
	OFF Messages are not transmitted.
	PATCH Only in patch mode.
	PERFORM Only in performance mode.
Pad 1–8	Specifies the note that is transmitted.
Note Number	C–G9
Pad 1–8 Velocity	Specifies the velocity of the note that is transmitted.
	OFF, 1–127
Pad 1–8 Channel	Specifies the MIDI channel of the note that is transmitted.
	1–16

Holding MIDI Note Messages (Hold)

You can specify that the MIDI note message is held even after you release your hand from the pad (Hold). This is convenient when you want to play a sustained note or a phrase.

1. Press the [LOOP] button while pressing the pad.
Note is held even after you release your hand from the pad.

MEMO

- If you're pressing more than one pad, all of them are held.
 - Notes are also held if you first hold down the [LOOP] button and then press each pad.
2. If you press a pad while a note is being held, the hold function is cancelled for that pad.
If you press the [LOOP] button by itself while notes are being held, the hold function is cancelled for all pads.

Patch Edit / Drum Kit Edit

For the Wave Group parameter, you can now select SAMP (user sample) or MSAM (user multisample).



SAMP	Select a wave (user sample) that you imported via sample import. The name of the file that was imported is shown as the wave name.
MSAM	Select a user multisample that you created by combining multiple user samples. User multisamples can be created using the “JUNO-DS Tone Manager” PC software.

DAW Control

In DAW control mode, octave shift (OCTAVE [DOWN] / [UP] buttons) is now available. You can change the octave of the note messages that are transmitted via MIDI.

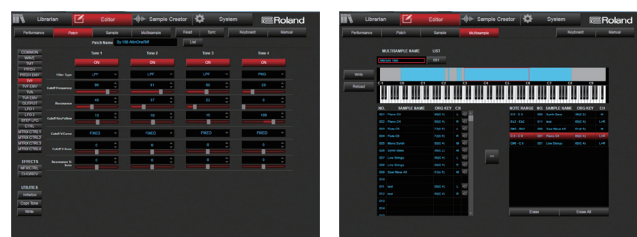
Level Meter

The display conditions have changed for the level meter shown by the pad illumination.

- (Before change): In patch mode, the meter indicates the level of the sound played by the keyboard.
- (After change): The meter indicates the level of the sound played in the mode for which Pad Note Switch is available.

Support for JUNO-DS Tone Manager

Now it supports for “JUNO-DS Tone Manager” which is a Computer software to manage and edit the patches/performances/samples. It lets you efficiently handle large numbers of contents on your computer.



Sample Import

- The amount of user memory has increased, allowing you to import more samples.
- The Original Key and Loop Switch values of a WAV file that you create using the “JUNO-DS Tone Manager” software are automatically applied when importing the sample.

Sample Edit

The Start/Loop/End Point of a WAV file that you create using the “JUNO-DS Tone Manager” software are automatically applied as the default values when you edit each sample.