

SOUND PACK/WAVE EXPANSION Install Manual

This manual explains how to import or install SOUND PACK and WAVE EXPANSION on the JUPITER-X/Xm.
Read this in conjunction with the JUPITER-X/Xm Owner's Manual and Reference Manual (PDF).

Preparing the Sound Files

* If you're using the USB flash drive for the first time, format it using the JUPITER-X/Xm.

→ "Formatting a USB Flash Drive" (Owner's Manual)

1. Prepare the sound file that you will add on the JUPITER-X/Xm, and place the file on your computer.

MEMO

Sound files such as SOUND PACK or WAVE EXPANSION can be obtained via the Roland Cloud.

For more about Roland Cloud, refer to the Roland website.

→ <https://www.roland.com/>

2. Connect the USB flash drive to your computer.

3. Save the file in the appropriate directory of your USB flash drive.

SOUND PACK (extension: .SDZ): ROLAND/SOUND folder

WAVE EXPANSION (extension: .EXZ): Root directory

4. Disconnect the USB flash drive from your computer.

Adding the Sounds

Depending on the sounds that you are adding, perform the steps described in "Importing a SOUND PACK" or "Installing a WAVE EXPANSION" (p. 2).

Importing a SOUND PACK

1. Connect the USB flash drive in which you saved the sound file to the JUPITER-X/Xm.

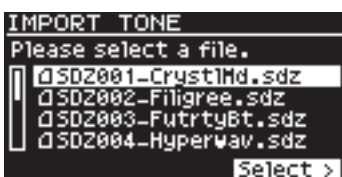
→ "Preparing the Sound Files" (p. 1)

2. Press the [MENU] button.

3. Use the [1] knob or PAGE [^] [v] buttons to select "UTILITY," and then press the [ENTER] button.

4. Use the [1] knob to select "IMPORT TONE," and then press the [ENTER] button.

5. Use the [1] knob to select the file that contains the tones that you want to import, and then press the PAGE [>] button.



6. Use the [1] knob to select the tone that you want to import, and then use the [2] knob to add a check mark.



MEMO

To select or de-select all tones, hold down the [SHIFT] button and operate the [2] knob.

To select or de-select a specific range of tones, press the [ENTER] button at the beginning of the range, then at the end of the range, hold down the [SHIFT] button and press the [ENTER] button.

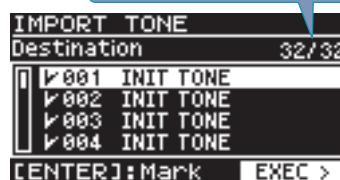
7. Press the PAGE [>] button.

8. Use the [1] knob to select the import-destination tone, and then press the [ENTER] button to add a check mark.

NOTE

- Be aware that the import-destination tone you select will be overwritten.
- An "*" is displayed for tones used in scene.
- If the import-destination has fewer tones than the import-source, not all of the selected tones will be imported.
- The number of tones is shown in the upper right of the screen.

Number of import-destination/import-source tones



- If there is a tone named "INIT TONE," it is automatically selected as the import-destination tone.
If you want to keep that tone, clear the check mark.

9. Press the PAGE [>] button.

A confirmation screen appears.

If you decide to cancel, press the [EXIT] button.

MEMO

The first time you import, the user license registration screen appears.

To execute, use the PAGE [>] button to select "OK," and then press the [ENTER] button.

10. To execute, use the PAGE [>] button to select "OK," and then press the [ENTER] button.

When import is completed, the message "Import Tone Completed!" appears.

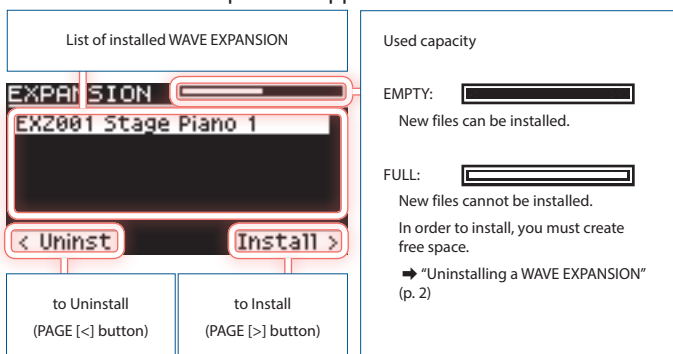
NOTE

Never turn off the power or disconnect the USB flash drive during a process, such as while the "Processing..." display is shown.

Installing a WAVE EXPANSION

1. While pressing the [ENTER] button, turn on the power.

The EXPANSION top screen appears.



2. Press the PAGE [>] button to move to the installation screen.

3. Use the PAGE [^] [v] buttons to select the file that you want to install, and then press the PAGE [>] button.

A confirmation screen appears.

If you decide to cancel, press the [EXIT] button.

MEMO

The first time you install, the user license registration screen appears.

To execute, use the PAGE [>] button to select "OK," and then press the [ENTER] button.

4. To execute, use the PAGE [>] button to select "OK," and then press the [ENTER] button.

Uninstalling a WAVE EXPANSION

If there is insufficient free memory space, uninstalling a previously installed WAVE EXPANSION will let you install a new WAVE EXPANSION.

1. While pressing the [ENTER] button, turn on the power.

The EXPANSION top screen appears.

2. Use the PAGE [^] [v] buttons to select the file that you want to uninstall, and then press the PAGE [<] button to move to the uninstallation screen.

A confirmation screen appears.

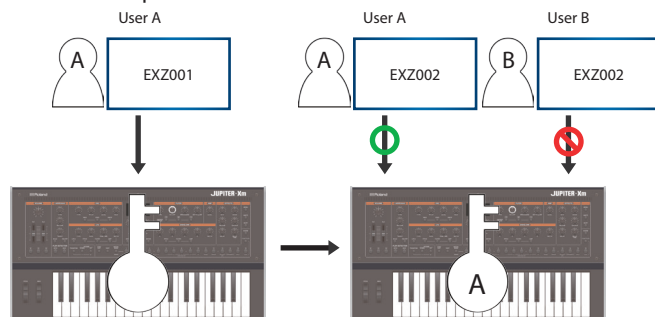
If you decide to cancel, press the [EXIT] button.

3. To execute, use the PAGE [>] button to select "OK," and then press the [ENTER] button.

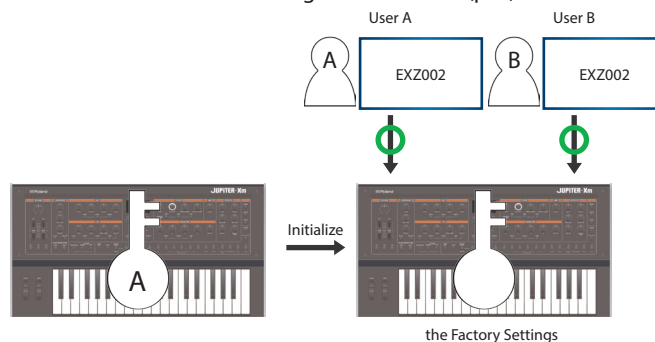
User License

SOUND PACK and WAVE EXPANSION are associated with the user licenses of the user who downloaded them.

SOUND PACK or WAVE EXPANSION that have differing user licenses cannot be imported into the same JUPITER-X/Xm.



If you want to import or install SOUND PACK and WAVE EXPANSION that has a different user license than what is already registered to this JUPITER-X/Xm unit, you must initialize the user licenses by performing the procedure described in "Initializing the User Licenses While Preserving the User Data" (p. 3).



Initializing the User Licenses While Preserving the User Data

If you've initialized the user licenses, you'll be able to import or install SOUND PACK and WAVE EXPANSION that you downloaded using a new user license.

To initialize the user licenses, perform the steps described in "Backing Up Data to USB Flash Drive (BACKUP)," "Returning to the Factory Settings (FACTORY RESET)," and "Restoring Backup Data (RESTORE)."

NOTE

- Installed WAVE EXPANSION are deleted.
- Never turn off the power or disconnect the USB flash drive during a process, such as while the "Processing..." display is shown.

Backing Up Data to USB Flash Drive (BACKUP)

Here's how to back up user data to a USB flash drive.

1. Press the [MENU] button.
2. Use the [1] knob or PAGE [^] [v] buttons to select "UTILITY;" and then press the [ENTER] button.
3. Use the [1] knob to select "BACKUP;" and then press the [ENTER] button.
The BACKUP screen appears.
4. Use the PAGE [<] [>] buttons to move the PAGE, and use the [2] knob to change characters.
5. When you've specified the file name, press the [ENTER] button.
A confirmation message appears.
If you decide to cancel, press the [EXIT] button.
If a file of the same name exists, a confirmation screen (Overwrite?) asks whether you want to overwrite the existing file.
6. To execute, use the [2] knob to select "OK;" and then press the [ENTER] button.
When the backup is finished, the screen indicates "Completed!"

Returning to the Factory Settings (Factory Reset)

NOTE

- When you execute this operation, all saved settings including the sound parameters will be lost.

1. Press the [MENU] button.
2. Use the [1] knob or PAGE [^] [v] buttons to select "UTILITY;" and then press the [ENTER] button.
3. Use the [1] knob to select "FACTORY RESET;" and then press the [ENTER] button.
A confirmation message appears.
If you decide to cancel, press the [EXIT] button.

4. To execute, use the [2] knob to select "OK;" and then press the [ENTER] button.

The display indicates "Completed. Turn off power."

5. Turn the power of the JUPITER-X/Xm off and then on again.

The user data and user licenses are initialized.

Restoring Backup Data (RESTORE)

Here's how user data that you backed-up on a USB flash drive can be returned to the JUPITER-X/Xm. This operation is called "restore."

1. Press the [MENU] button.
2. Use the [1] knob or PAGE [^] [v] buttons to select "UTILITY;" and then press the [ENTER] button.
3. Use the [1] knob to select "RESTORE;" and then press the [ENTER] button.
4. Use the [1] knob to select the file that you want to restore.
5. Press the [ENTER] button.
A confirmation message appears.
If you decide to cancel, press the [EXIT] button.
6. To execute, use the [2] knob to select "OK;" and then press the [ENTER] button.
When the restore operation is finished, the screen indicates "Completed. Turn off power."
7. Turn the power of the JUPITER-X/Xm off and then on again.

Error Message

Message	Action
Expansion File Not Found!	This appears if the USB flash drive does not contain a WAVE EXPANSION file. Check that the file is correctly saved, and that the file extension is ".exz."
Incorrect File!	This appears if the selected sound file is not compatible with the JUPITER-X/Xm, or if the file is damaged. Check the models that are listed as compatible for the file you downloaded, and try downloading again.
Incorrect License! Please Remove License	This appears if the selected sound file is associated with a different user license. To install, you must either obtain a file that has the same user license as the currently-installed sound file, or initialize the user licenses.
Expansion Memory Full!	This appears if there is insufficient free space for installation. To install, you must uninstall a currently-installed to create free space.
It has already been installed	This appears if the selected file is already installed. There is no need to reinstall.