



# KATANA:GO

## Owner's Manual

There are two different external designs for the KATANA:GO corresponding to the period in which they are sold. This manual only features illustrations for one of these designs, but there is no difference in functionality or sound quality between the two.

For details, see "About the external design of the KATANA:GO" (BOSS website).

[https://roland.cm/katana-go\\_om](https://roland.cm/katana-go_om)

# Panel descriptions



## 1 PHONES jack

Connect your headphones, earphones, recording equipment and so on here.

### MEMO

Connect devices that have a stereo jack (three-conductor plug).

## 2 USB port

Connect this to your computer or commercially available USB AC adaptor to supply power to or recharge this unit. You can connect this to your computer to exchange audio data.

### MEMO

When charging this unit, connect to the USB port on your computer or use a commercially-available USB power adaptor (at least 5 V, 500 mA).

Do not use a USB cable that is designed only for charging. Charge-only cables cannot transmit data.

This unit uses a lithium-ion battery. Even if you do not intend to use this product for a long time, recharge the internal lithium-ion battery once every three months to avoid degradation.

5–35°C

To take full advantage of the lithium-ion battery's performance, we recommend that you charge it in a temperature range of 10–30°C.

## 3 [STAGE FEEL] button

Use this to switch between the STAGE FEEL functions ([Switching between the STAGE FEEL functions \(p. 7\)](#)).

This gives you a sound like what a guitarist standing on stage would hear.

**4 [ ] (Bluetooth) button**

Press this button when you want to use Bluetooth ([Listening to the audio from your mobile device on this unit \(Bluetooth® audio\) \(p. 10\)](#)).

You can listen to the audio you're playing back on your mobile device on this unit.

When connecting the BOSS TONE STUDIO for KATANA:GO app to this unit, see "Connecting the BOSS TONE STUDIO iOS App to the KATANA:GO Unit", or "Connecting the BOSS TONE STUDIO Android App to the KATANA:GO Unit" (BOSS website).

You can connect this device to pedals such as the FS-1-WL or EV-1-WL (both sold separately). For details, see "Using the BOSS TONE STUDIO for KATANA:GO" (BOSS website).

**MEMO**

To unpair when connected, long-press this button.

When unpairing, delete the registration data on your mobile device.

**5 [POWER] switch**

Turns the power of this unit off/on.

**MEMO**

- You may hear a loud sound if you plug or unplug this device from your guitar or bass guitar while the power switch is on. Make sure to turn the power off before connecting or disconnecting the device.
- The unit can be recharged whether the [POWER] switch is OFF or ON (and can be used while recharging).

**6 [Volume] dial**

Adjusts the volume of signal output from the PHONES jack.

**NOTE**

- You may hear a loud sound when you turn on the power. For this reason, turn the master volume all the way down before turning on the power.
- When adjusting the volume balance between the guitar and the Bluetooth® audio, adjust the volume on the Bluetooth audio side.

**7 CHARGE indicator**

Shows the status of power supply to this unit.

Lit color	Explanation	
Orange	Power is being supplied to the USB port.	Charging.
Green		Charging is completed.
Blinks green and orange		A charging error occurred. Please contact your retailer, a Roland service center, or an official Roland dealer for service.
Red	Power is not being supplied to the USB port.	The remaining battery power is low. Charge the battery.
Unlit		The unit powers down within 30 minutes.
		–

**8 Display**

Shows the bank number, channel, memory name and other information.

If this unit is not used for a certain period of time, the display changes to a screen saver. When you operate either the multi-function button, the [A], [B], [C], [ ] (Bluetooth) or [STAGE FEEL] buttons, the display returns to normal.

**MEMO**

The screen saver reduces battery usage, which lets you operate the unit for longer. This function can't be turned off.

**9 Input plug**

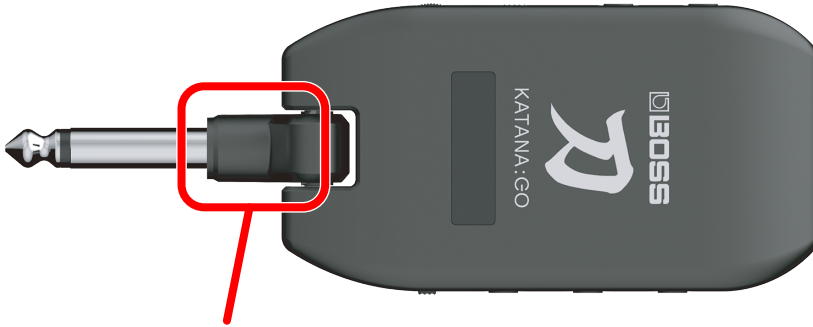
Connect your guitar or bass guitar here.

## Panel descriptions

### MEMO

Fold out the input plug of the KATANA:GO and plug the jack into your guitar or bass guitar while holding the base of the input plug. If you plug this jack in while holding the main housing or any other part, you might scratch your guitar or bass guitar.

Turn the power off or turn the master volume all the way down before connecting or disconnecting the device.



Hold this part when plugging in

### 10 [A], [B] and [C] buttons

These buttons switch between channels A–C.

### 11 Multi-function button

This button is used for switching between bank numbers and for activating the tuner.

Operation	Explanation
Press once	Activates the tuner (“Using the tuner (p. 9)”).
Press towards the + side	Switches between bank numbers.
Press towards the – side	

## Playing back/recording the sound of this unit using your computer, iPad or iPhone

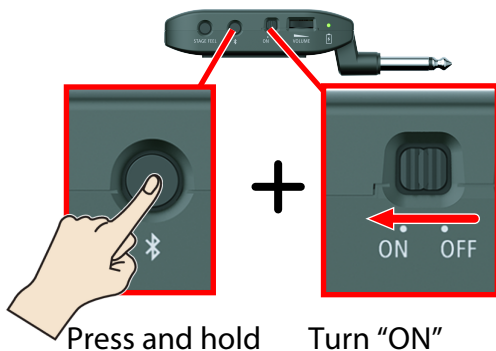
Use the standard USB driver provided by the operating system.

When connecting an iPad or iPhone, use a commercially available USB Type-C® type adaptor or cable.

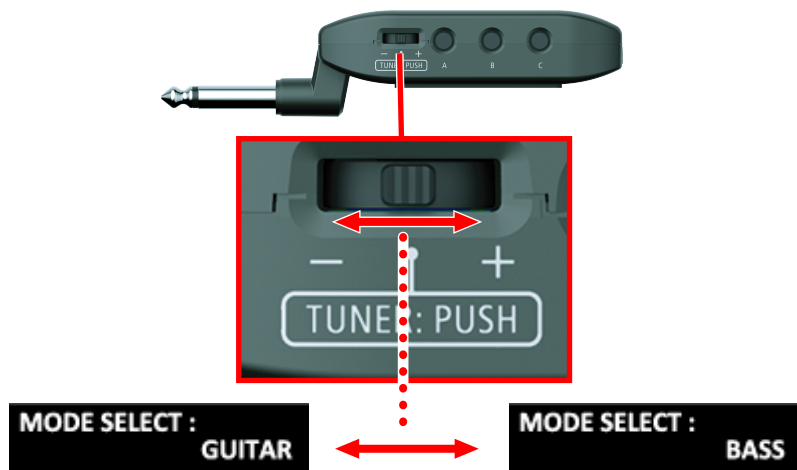
# Switching between GUITAR and BASS mode

Here's how to select whether to connect the KATANA:GO to a guitar or to a bass guitar.

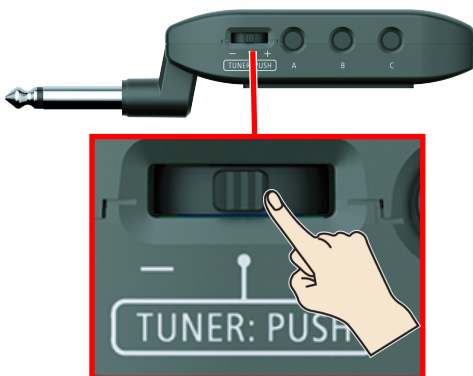
- 1 Turn the [POWER] switch to the "OFF" setting.
- 2 Turn the [POWER] switch "ON" while holding down the [BT] (Bluetooth) button.



- 3 Use +/- on the multi-function button to switch between modes.



- 4 Press the multi-function button once.



- 5 Once the message "Turn off the power" appears on the display, turn the KATANA:GO off and then on again.

## MEMO

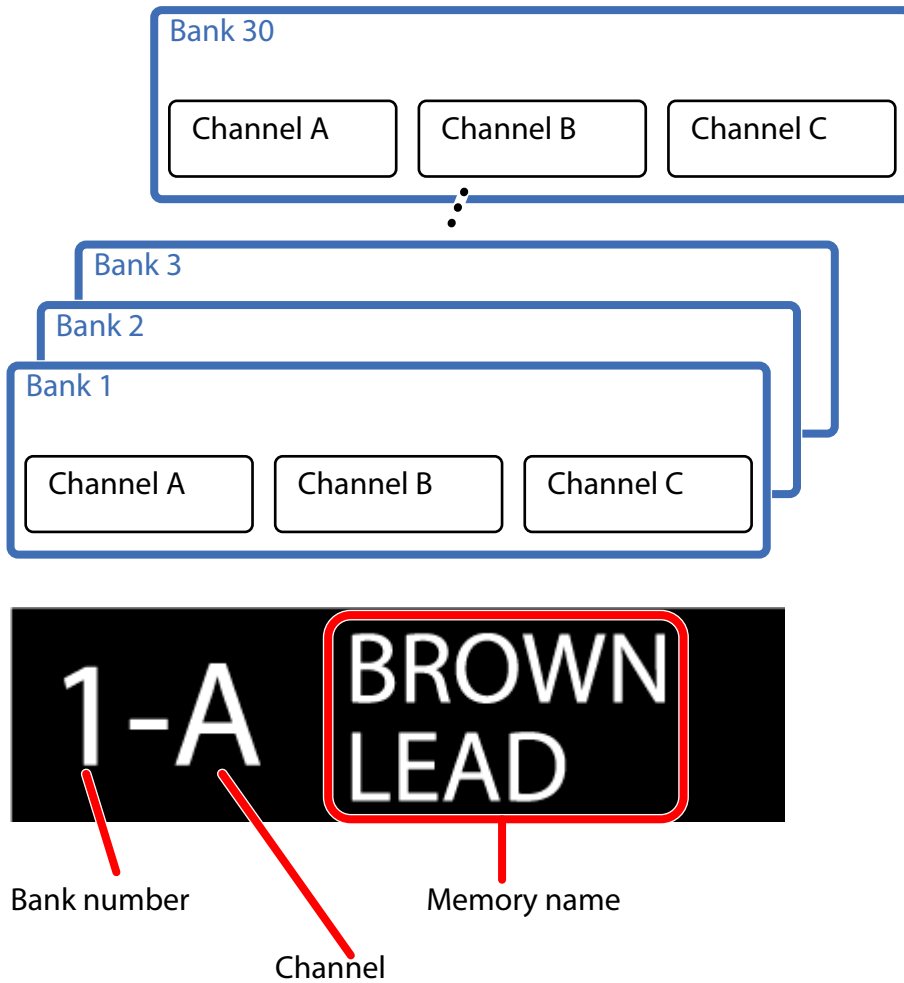
This is set to "GUITAR" when using the factory settings.

The KATANA:GO starts up using the selected mode until the next time you switch modes.

# Switching between memories

On the KATANA:GO, a combination of amps and effect settings is called a “memory”.

The combination of three memories (channels A–C) is called a “bank”. There are 30 banks saved for the GUITAR and BASS modes respectively.



Text shown on the KATANA:GO display

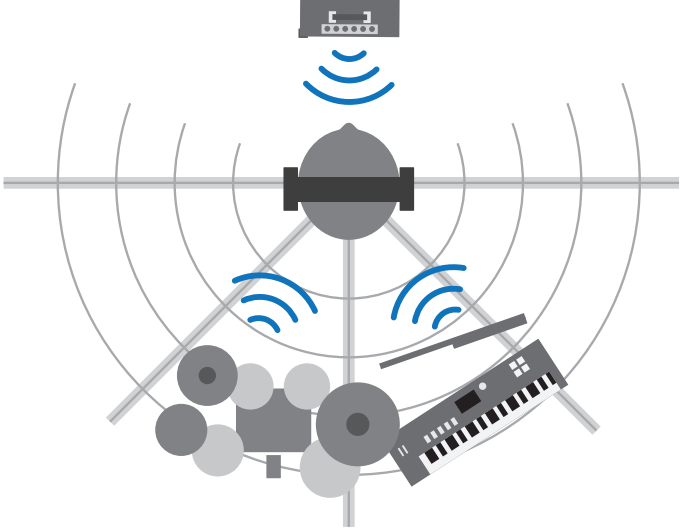
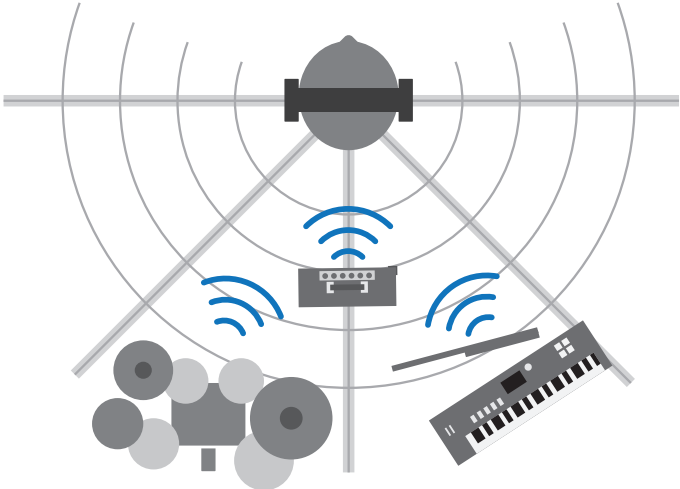
- 1 Use the +/- on the multi-function button to switch between bank numbers.
- 2 Press the [A]–[C] buttons to switch the channel.

You can use the BOSS TONE STUDIO for KATANA:GO app to edit sounds and manage the sound library. For details, see “Using the BOSS TONE STUDIO for KATANA:GO” (BOSS website).

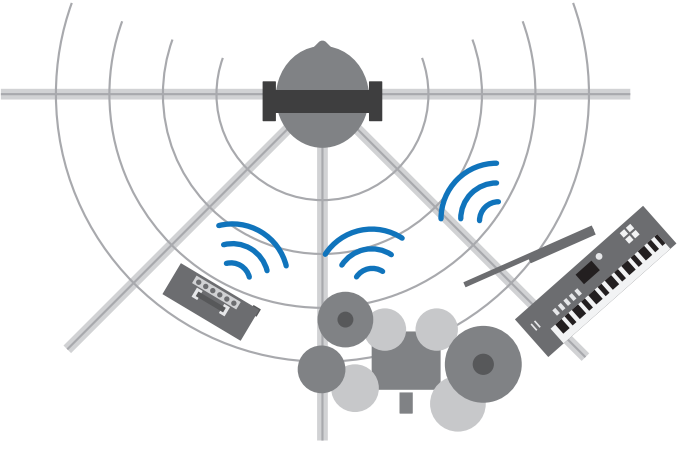
# Switching between the STAGE FEEL functions

You can switch between STAGE FEEL functions by pressing the [STAGE FEEL] button.

This gives you a sound like what a guitarist standing on stage would hear.

Value	Explanation
OFF	Turns the stage feel function off.
MODE1	<p>Sets the guitar amp sound to be heard from the front. The Bluetooth audio is heard from the rear.</p>  <p>The diagram illustrates the sound field for MODE1. A central speaker on a stand is positioned behind a horizontal line representing the stage. Below the stage, there is a guitar amp and a drum set. Blue curved lines represent sound waves. From the guitar amp, waves radiate forward towards the audience. From the central speaker, waves radiate rearward towards the stage area, indicating that Bluetooth audio is directed to the rear.</p>
MODE2	<p>Sets the guitar amp sound and the Bluetooth audio to be heard from the rear.</p>  <p>The diagram illustrates the sound field for MODE2. Similar to the previous diagram, a central speaker is behind the stage and a guitar amp is in front. Blue curved lines represent sound waves. In this mode, waves from both the guitar amp and the central speaker radiate rearward towards the stage area, indicating that both the guitar amp sound and the Bluetooth audio are directed to the rear.</p>

## Switching between the STAGE FEEL functions

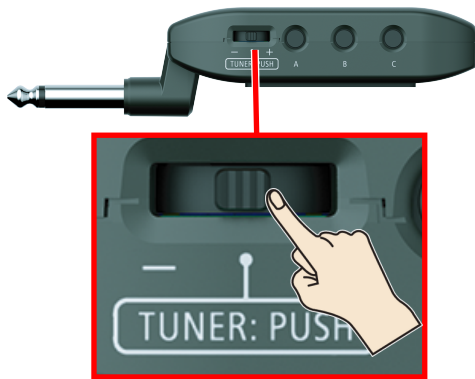
Value	Explanation
CUSTOM	<p>Lets you customize the stage feel sound as you like. With the default settings, the guitar amp sound is heard from the left and to the rear, and the Bluetooth audio is heard from the right and to the rear.</p>  <p>Use the BOSS TONE STUDIO for KATANA:GO app to customize the settings.</p>



# Using the tuner

Use this feature to tune your guitar.

- 1 **Press the multi-function button.**



- 2 **Play a string on your guitar (a single note).**

The key (note name) and pitch deviation are shown on the display.



- 3 **To exit the tuner function, press a different button or press the multi-function button again.**

Use the BOSS TONE STUDIO for KATANA:GO app to change the reference pitch. For details, see "Using the BOSS TONE STUDIO for KATANA:GO" (BOSS website).

# Listening to the audio from your mobile device on this unit (Bluetooth® audio)

---

Connect your mobile device to this unit via Bluetooth wireless signal when you want to listen to the audio you're playing back on your mobile device.

## Pairing this unit with your mobile device

Register your mobile device with this unit.

- 1 Press the [⌘] (Bluetooth) button.



Or



- 2 Press the [⌘] (Bluetooth) button.



You don't need to do this if "⌘: X" is shown in the display.

- 3 On your mobile device (such as a smartphone), turn the Bluetooth switch on.
- 4 Tap "KATANA:GO AUDIO" that's shown in the Bluetooth screen of your mobile device.

This pairs this unit with your mobile device.

When pairing is completed, "⌘: ○" appears in the display.

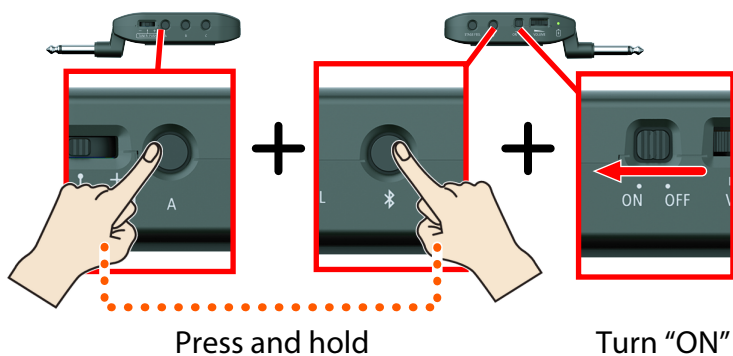


### MEMO

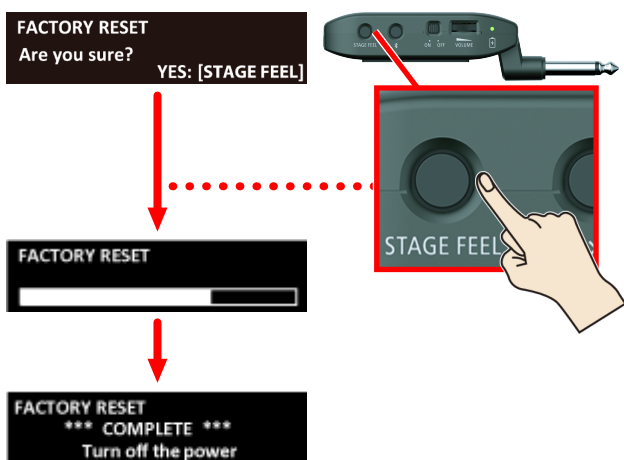
When you long-press the [⌘] (Bluetooth) button while Bluetooth is connected, the connection is temporarily severed. The connection is reestablished when you turn the power on again. When unpairing, delete the registration data on your mobile device.

# Restoring the factory settings (factory reset) of this unit

- 1 Turn the [POWER] switch "ON" while holding down the [A] button and the [↻] button.



- 2 Press the [STAGE FEEL] button.



- 3 Once the message "Turn off the power" appears on the display, turn the KATANA:GO off and then on again.

## MEMO

When you execute a factory reset, all Bluetooth audio and MIDI devices that you have connected thus far can no longer be connected to this unit. To fix this, delete the registration on the mobile device to which you want to reconnect, and pair again.

# Troubleshooting

Problem	What to check and do
The CHARGE indicator alternately blinks green and orange	<p>A charging error occurred.</p> <p>The ambient temperature might be above 35°C.</p> <ol style="list-style-type: none"><li data-bbox="815 387 1503 495">1 <b>In this case, charging might stop for a while in order to protect the lithium-ion battery. Use the unit within the recommended ambient temperature range of 10–30°C.</b></li><li data-bbox="815 506 1503 663">2 <b>If the indicator continues alternately blinking green and orange even though you are charging in the recommended temperature range, contact your retailer, a Roland service center, or an official Roland dealer for service.</b></li></ol>
"MEMORY DAMAGED!" appears on the display	<p>Data may have been damaged.</p> <p>Execute the factory reset operation.</p>
Power won't turn on	<p>Update the firmware to the latest version.</p> <p>If this does not solve the problem, contact your dealer, a Roland service center, or an official Roland dealer.</p> <p>For a list of Roland service centers and official Roland dealers, refer to the Roland website.</p>

**KATANA:GO**  
**Owner's Manual**  
**01**  
**Roland Corporation**

**© 2025 Roland Corporation**